

A green chalkboard with two pieces of pink chalk and some faint white chalk markings. The chalkboard is the background for the text.

State of Rice's ECE Department

Behnaam Aazhang,
Chair



Why did I Take This Job?

- More Money?
- Better Office?
- Power?
 - i.e., Push Rich Around?
- ???



Faculty and Staff

- 19 Tenure-Track Faculty
 - 8 IEEE Fellows
 - 6 Endowed Chairs
 - International Awards
- **2 Open Positions**
- 3 Research Faculty
- 20 Joint/Adjunct
- Outstanding Staff
 - 40 Current and **2 Open Positions**



Students

- 110 → 140 MS/PhD Students
- 15 → 30 MEE
- 60 → 100 BSEE Seniors
 - IEEE, Eta Kappa Nu, Tau Beta Pi, SWE
- Life after Rice
 - Broadcom, Exxon, HP, IBM, Intel, NEC, NI, Nokia, Qualcomm, TI, ViaSat, ...
 - Colorado, Cornell, Georgia Tech, Illinois, MIT, Northwestern, Princeton, Purdue, Rutgers, SMU, Virginia, ...



Facilities

- Abercrombie Lab
 - Two State of the Art Clean Rooms
 - Recently Renovated Undergraduate Lab
 - DSP Elite Lab
 - Available Lab Space!
 - Computer Engineering
 - Engineering Physics
- Duncan Hall
- Space Physics



Research Groups and Centers

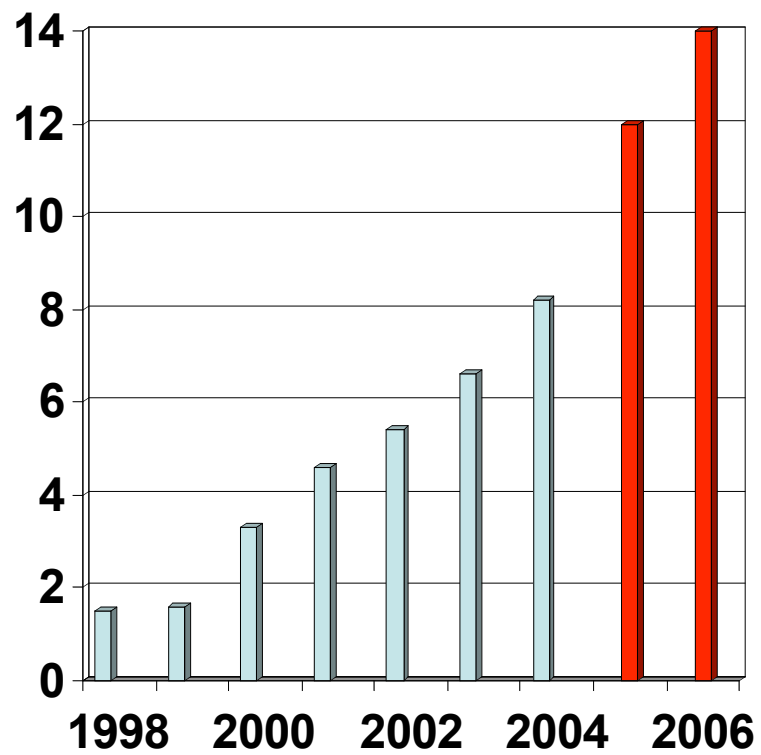
- Center for Multimedia Communication (CMC)
- Networking Research Group (RNG)
- DSP Group
- MURI Center for Nanoshell Design
- Laboratory for Nanophotonics (LANP)
- Dynamical Systems Groups
- Connexions



Research Focus

- Network and Embedded Systems Architecture
- Computer-Aided Design for Emerging Nanotechnologies
- Terahertz and Laser Spectroscopy and Imaging
- Semiconductor Nanostructures
- and Much More

Funding

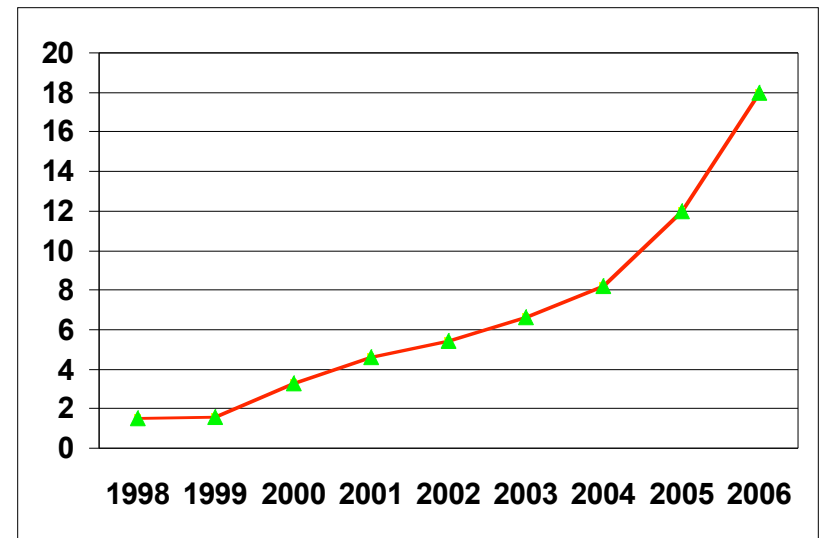


■ Research
Expenditure per
year in M\$



Potentials and Strategies

- Visibility
- Global Presence
 - Research
 - Education
- Develop Leaders
- Overhaul of ECE Curriculum
 - Fundamentals
 - Design
 - Integration of Research



Why and Our Vision

- “Top Ten” Attitude
 - Contagious
 - Small Size, Location
- Global Impact
- Working on the Vision!
 - Control of our Budget
 - Advisory Council

