

ELEC 306
Problem Set 1
Due: September 5, 2014

Homework Problems.

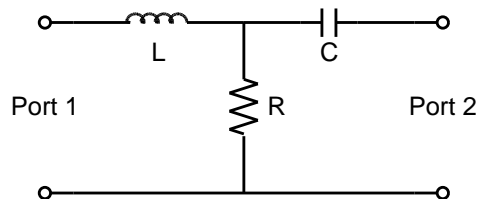
Work the following problems in Sadiku:

H1.1 11.62

H1.2 11.64

H1.3 A lossless cable has parameters $L = 0.42 \mu\text{H}/\text{m}$ and $C = 80 \text{ pF}/\text{m}$. Find the velocity and the characteristic impedance of the cable.

H1.4 Find the \mathbf{Z} matrix for the following 2-port network:



Real Problems.

None this week.